

At: Aelodau Cyngor Ymgynghorol
Sefydlog ar Addysg Grefyddol
(CYSAG)

Dyddiad: 9 Hydref 2024

Deialu 01824 712568
Union:

e-bost: democrataidd@sirddinbych.gov.uk

Annwyl Syr / Fadam

Fe'ch gwahoddir i ddod i gyfarfod o'r **CYNGOR YMGYNGHOROL SEFYDLOG AR ADDYSG GREFYDDOL (CYSAG)** am **10.00 am, DYDD MAWRTH, 15 HYDREF 2024 yn TRWY CYFRWNG FIDEO.**

Yn gywir

Gary Williams
Swyddog Monitro

AGENDA

MYFYRDOD TAWEL

1 YMDDIHEURIADAU

2 DATGAN CYSYLLTIAD

Yr Aelodau i ddatgan unrhyw gysylltiad personol neu gysylltiad sy'n rhagfarnu ag unrhyw fater a nodwyd i'w ystyried yn y cyfarfod hwn.

3 MATERION BRYD FEL Y'U CYTUNWYD GAN Y CADEIRYDD

Hysbysiad o eitemau y dylid, ym marn y Cadeirydd, eu hystyried yn y cyfarfod fel materion brys yn unol ag Adran 100B(4) Deddf Llywodraeth Leol 1972.

4 COFNODION Y CYFARFOD DIWETHAF (Tudalennau 7 - 12)

Derbyn a chymeradwyo cofnodion cyfarfod CYSAG Sir Ddinbych a gynhaliwyd ar 26 Mehefin 2024 (copi wedi'i gynnwys).

5 NEWYDDLLEN YR HAF SIR DDINBYCH 2024 (Tudalennau 13 - 16)

Derbyn Newyddlen yr Haf Sir Ddinbych a Chonwy 2024 (copi wedi'i gynnwys).

6 CREFYDD, GWERTHOEDD A MOESEG, SAFBWYNT UWCHRADD - SARAH GRIFFITHS (PENNAETH CREFYDD, GWERTHOEDD A MOESEG, YSGOL DINAS BRÂN) (Tudalennau 17 - 18)

Derbyn cyflwyniad ar y ddarpariaeth AG a Chrefydd, Gwerthoedd a Moeseg yn Ysgol Dinas Brân.

7 Y WYBODAETH DDIWEDDARAF AM AROLYGON ESTYN (Tudalennau 19 - 20)

Cyhoeddwyd canllawiau arolygon Estyn ar gyfer ysgolion a gaiff eu harolygu rhwng mis Medi 2024 a 2030 yn ystod yr haf. Gellir dod o hyd i ddogfennau'n egluro beth mae Estyn yn ei arolygu a sut ar Wefan Estyn

Sut rydym yn arolygu

Cymraeg [Sut-rydym-yn-arolygu-Ysgolion-a-gynhelir-ac-UCDau_0.pdf \(gov.wales\)](#)

Saesneg - [How We Inspect - 2024 maintained schools and PRUs \(gov.wales\)](#)

Beth rydym yn ei arolygu

Cymraeg - [Beth rydym yn ei arolygu - Ysgolion a gynhelir ac UCDau \(gov.wales\)](#)

Saesneg - [What We Inspect - 2024 Maintained Schools and PRUs \(gov.wales\)](#)

8 ADRODDIAD BLYNYDDOL DRAFFT CYSAG 2023-24 (Tudalennau 21 - 40)

To consider and approve the draft SACRE Annual Report 2023 – 24 (copy enclosed).

9 CCYSAGC (Tudalennau 41 - 42)

- Derbyn diweddariad llafar am gynhadledd CCYSAGC a gynhaliwyd ar 13 Mehefin 2024.
- Cytuno pwy fydd yn bresennol yng nghyfarfod nesaf CCYSAGC ar 14 Tachwedd 2024.

10 DYDDIAD Y CYFARFODYDD NESAF

- Gwanwyn 2025 - 10am 14 Chwefror 2025
- Haf 2025 - 10am 4 Mehefin 2025
- Hydref 2025 - 10am 2 Hydref 2025

AELODAETH

Cynghorwyr yn cynrychioli Cyngor Sir Ddinbych

Ellie Chard
Ann Davies
James May
Merfyn Parry

Huw Williams
Delyth Jones
Emrys Wynne

Yn cynrychioli Enwadau Crefyddol

Suzy Sturley
Mr. Dominic Oakes
Y Parch. B H Jones

Y Parch. Martin Evans-Jones
Jennie Downes
Collette Owen

Yn cynrychioli Cymdeithasau Athrawon

Susan Williams
Leah Crimes

Sarah Griffiths

Aelodau Cyfetholedig

T. Ap Siôn

COPIAU AT:

Bob Cynghorydd er gwybodaeth
Y Wasg a Llyfrgelloedd
Cynghorau Tref a Chymuned

Mae tudalen hwn yn fwriadol wag

DEDDF LLYWODRAETH LEOL 2000

Cod Ymddygiad Aelodau

DATGELU A CHOFRESTRU BUDDIANNAU

Rwyf i,
(enw)

*Aelod /Aelod cyfetholedig o
(*dileuer un)

Cyngor Sir Ddinbych

YN CADARNHAU fy mod wedi datgan buddiant ***personol / personol a sy'n rhagfarnu** nas datgelwyd eisoes yn ôl darpariaeth Rhan III cod ymddygiad y Cyngor Sir i Aelodau am y canlynol:-
(*dileuer un)

Dyddiad Datgelu:

Pwyllgor (nodwch):

Agenda eitem

Pwnc:

Natur y Buddiant:

(Gweler y nodyn isod)*

Llofnod

Dyddiad

Noder: Rhowch ddigon o fanylion os gwelwch yn dda, e.e. 'Fi yw perchennog y tir sy'n gyfagos i'r cais ar gyfer caniatâd cynllunio a wnaed gan Mr Jones', neu 'Mae fy ngŵr / ngwraig yn un o weithwyr y cwmni sydd wedi gwneud cais am gymorth ariannol'.

Mae tudalen hwn yn fwriadol wag

CYNGOR YMGYNGHOROL SEFYDLOG AR ADDYSG GREFYDDOL (CYSAG)

Cofnodion cyfarfod o'r Cyngor Ymgynghorol Sefydlog ar Addysg Grefyddol (CYSAG) a gynhaliwyd yn trwy cyfrwng fideo , Dydd Mercher, 26 Mehefin 2024 am 10.00 am.

YN BRESENNOL

Yn Cynrychioli Cyngor Sir Ddinbych

Y Cynghorwyr Ellie Chard, Ann Davies a/ac Emrys Wynne

Yn Cynrychioli Enwadau Crefyddol - Collette Owen

Yn Cynrychioli Cymdeithasau Athrawon – Sarah Griffiths

HEFYD YN BRESENNOL

Ymgynghorydd Addysg Grefyddol (PL), Prif Reolwr Addysg (JB), Cebtre Cenedlaethol Cymraeg ar Gyfer Swyddog Addysg Grefyddol (Dr JA) a Gweinyddwyr Pwyllgorau (NH a RTJ)

1 YMDDIHEURIADAU

Cafwyd ymddiheuriadau am absenoldeb gan Jennie Downes, Leah Crimes, Susan Williams, Jennifer Harding-Richards a'r Cynghorwyr Gill German a Delyth Jones.

2 DATGAN CYSYLLTIAD

Datganodd y Cynghorydd Ellie Chard gysylltiad personol ag eitem 7 gan ei bod yn llywodraethwr yn Ysgol Tir Morfa.

Datganodd y Cynghorydd Emrys Wynne gysylltiad personol ag Eitem 7 gan ei fod yn llywodraethwr yn Ysgol Brynhyfryd ac Ysgol Borthyn.

3 MATERION BRYN FEL Y'U CYTUNWYD GAN Y CADEIRYDD

Dim.

4 COFNODION Y CYFARFOD DIWETHAF

Cyflwynwyd cofnodion cyfarfod y Cyngor Ymgynghorol Sefydlog ar Addysg Grefyddol a gynhaliwyd ar 22 Chwefror 2024.

PENDERFYNWYD: *derbyn a chymeradwyo cofnodion y cyfarfod a gynhaliwyd ar 22 Chwefror 2024 yn gofnod gwir a chywir o'r gweithrediadau.*

5 CANOLFAN GENEDLAETHOL ADDYSG GREFYDDOL CYMRU

Rhoddodd Dr Joshua Andrews o Brifysgol Bangor gyflwyniad ar Ganolfan Genedlaethol Addysg Grefyddol Cymru.

Ail-lansiwyd y ganolfan yn 2022 gyda'r nod o gynnig arbenigedd academaidd a chefnogaeth addysgegol ar gyfer addysgu addysg grefyddol. Mae'r ganolfan yn canolbwyntio ar athroniaeth, crefydd a moeseg a'r gynulleidfa darged yw athrawon a myfyrwyr cyrsiau cynradd a TAR.

Mae'r ganolfan yn cynnig gweithgareddau allweddol, yn cynnwys:

- Gweithdai
- Sesiynau adolygu
- Digwyddiadau Datblygu Proffesiynol Parhaus (DPP)

Cafodd yr aelodau wybodaeth am lwyddiannau'r ganolfan yn ystod y 12 mis diwethaf, a oedd yn cynnwys:

- **Blychau Arteffactau:** crëwyd 10 bocs o arteffactau crefydd penodol ar gyfer addysgu crefyddau mwyaf y byd i'w benthyg i ysgolion
- **Sesiynau Adolygu Lefel A:** Trefnwyd sesiwn adolygu Lefel A mewnol ar gyfer myfyrwyr o Ynys Môn a Gwynedd, yn cynnwys sesiynau i fyfyrwyr Coleg Sir Gâr
- **Hyfforddiant DPP:** Darparwyd hyfforddiant DPP i athrawon ar Fwdhaeth a Hindŵaeth
- **Sesiynau ar-lein:** Cynhaliwyd sesiynau ar-lein o fis Hydref 2023 tan fis Ionawr 2024 ar gyfer myfyrwyr ac athrawon TGAU a Lefel A, i archwilio perthnasedd athroniaeth, moeseg a chrefydd mewn cymdeithas gyfoes
- **Ysgol Haf:** Cynhaliwyd ysgol haf ar-lein fis Gorffennaf 2023, gan ddarparu 15 o ddarlithoedd i gyflwyno testunau athroniaeth, moeseg a chrefydd i fyfyrwyr ar lefel prifysgol
- **Addysgeg Holocost:** Cafwyd panel ar addysgeg Holocost a rhoddwyd sgwrs ar-lein gan oroeswr i ysgolion uwchradd

Cafwyd gwybodaeth am brosiectau cyfredol, yn cynnwys sesiynau adolygu, lansiad cenedlaethol y canllawiau adolygu, Gwersi Heddwch a digwyddiadau DPP.

Darparwyd gwybodaeth am y prosiectau newydd mae'r ganolfan wedi'u cychwyn, yn cynnwys:

- Fideos Adolygu TGAU: Cyfres o fideos adolygu TGAU byr dan y teitl 'A Topic in Ten' ar wahanol agweddau ar faes llafur TGAU CBAC
- Podlediad athroniaeth: Mae podlediad ar athroniaeth, crefydd a moeseg Lefel A yn cael ei ddatblygu, sy'n canolbwyntio ar faes llafur Lefel A CBAC ac sy'n cynnwys trafodaethau gydag ysgolheigion
- Cwrs Gwella Gwybodaeth Pwnc: Mae cyrsiau ar-lein ar gyfer myfyrwyr TAR yn cael eu datblygu. Bydd y rhain hefyd ar gael i athrawon er mwyn gwella eu gwybodaeth am y pwnc

Diolchodd y Cadeirydd i Dr Andrews am ei gyflwyniad a dywedodd fod croeso i'r Aelodau ofyn cwestiynau.

Gofynnodd yr aelodau am eglurhad ynghylch plant o gefndiroedd gwahanol yn cael eu hintegreiddio gyda chrefyddau gwahanol pan fyddan nhw'n dechrau yn yr ysgol uwchradd. Eglurodd Dr Andrews fod gan bob ysgol faes llafur wedi'i llunio'n lleol sy'n gallu cynnwys credoau crefyddol yn y gymuned. Mae llawer o ysgolion wedi gofyn am sesiynau gan y ganolfan ar destunau penodol.

Trafododd yr aelodau yr Ysgol Haf a gynhaliwyd a holi a fyddai modd cynnal sesiynau gwahanol dros nifer o wythnosau yn ystod y gwyliau haf. Eglurodd Dr Andrews fod yr Ysgol Haf yn rhad ac am ddim, a bod sesiynau'n cynnal ar-lein er mwyn i fwy o bobl allu manteisio arnynt. Gall sesiynau ychwanegol fod yn bosiblwydd, a bydd hynny'n cael ei gyflwyno i'r Bwrdd i'w drafod a'i ystyried ymhellach.

Diolchodd yr aelodau i Dr Andrews am yr adnoddau gwerthfawr sydd ar gael drwy'r ganolfan, yn enwedig y blychau arteffactau a gofynnwyd iddo a oes gwefan ar gael i ysgolion wneud cais i'w benthyg. Dywedodd Dr Andrews fod gwefan ar gael a bod system rota ar gyfer benthyg y blychau arteffactau.

Holodd yr aelodau a oes modd i gydweithwyr o ysgolion cynradd ddefnyddio adnoddau'r ganolfan. Croesawodd Dr Andrews y syniad a dywedodd y byddai'n cyflwyno hyn yng nghyfarfod nesaf y Bwrdd.

Diolchodd Dr Andrews i'r aelodau am eu sylwadau a'u hadborth.

Diolchodd y Cadeirydd i Dr Andrews am y cyflwyniad ac am ddod i'r cyfarfod, a chroesawodd y syniad o weithio mewn partneriaeth yn y dyfodol.

Penderfynwyd: derbyn a nodi'r cyflwyniad ar y Ganolfan Genedlaethol Addysg Grefyddol.

6 RE HUBS

Mae Jennifer Harding yn ymddiheuro nad yw'n gallu bod yn bresennol. Bydd eitem ar RE Hubs yn cael ei chynnwys ar raglen Cyngor Ymgynghorol Sefydlog ar Addysg Grefyddol yn yr hydref.

PENDERFYNWYD: gohirio'r eitem ar RE Hubs tan gyfarfod Cyngor Ymgynghorol Sefydlog ar Addysg Grefyddol yn yr hydref.

7 DADANSODDI ADRODDIADAU AROLYGON

Darparodd yr Ymgynghorydd AG drosolwg bras o ddadansoddiad adroddiadau arolygon CYSAG.

Mae'r dadansoddiad yn berthnasol i adroddiadau arolygon a gyhoeddwyd rhwng 7 Mehefin 2023 ac 1 Mai 2024.

Gan fod yr aelodau wedi darllen yr adroddiadau cyn y cyfarfod, gofynnodd yr Ymgynghorydd AG a oes gan unrhyw un gwestiwn neu sylwadau.

Dywedodd yr aelodau fod yr adroddiadau yn gadarnhaol iawn, ac roedd yn braf darllen sylwadau calonogol ar Les ac Agweddau ar Ddysgu a Gofal, Cefnogaeth a Chanllawiau.

PENDERFYNWYD *derbyn a nodi'r Dadansoddiad Adroddiadau Arolygon.*

8 CCYSAGC

Nid oedd cynrychiolydd Enwadau Crefyddol yn gallu bod yn bresennol. Darparodd y Cynghorydd Ellie Chard y wybodaeth ddiweddaraf ar eu rhan.

Roedd y gynhadledd ym Mhrifysgol Wreccsam ar 13 Mehefin 2024 yn gyfle da i bawb sy'n ymwneud â Chrefydd, Gwerthoedd a Moeseg rwydweithio.

Cafwyd anerchiad ysbrydoledig gan yr Athro Graham Donaldson, a siaradodd am raddfa'r diwygiad addysg a oedd yn angenrheidiol i ymateb i ddisgwyliadau newydd a chynyddol o ran pwrpas addysg. Roedd y drafodaeth yn canolbwyntio ar anghenion cymdeithas sy'n newid yn gyflym a chysyniadau newydd am wybodaeth. Edrych ar fyd lle mae deallusrwydd artifisial yn dominyddu a'r farchnad swyddi yn fwy hylifol a byd-eang. Mae sgiliau digidol yn dal yn cynyddu'n gyflym ac mae ar ddysgwyr angen y sgiliau anhepgor o greadigrwydd a meddwl beirniadol sydd eu hangen i addasu ac esblygu dysgu gydol oes.

Cafwyd anerchiad gan Ysgrifennydd Cabinet Addysg, Lynne Neagle ac Esgob Llandaf sy'n gyfrifol bortffolio addysg yr Eglwys yng Nghymru a mynegodd y ddau eu cefnogaeth i CCYSAGC.

Roedd y gweithdai a'r seminarau ar gael cyn diwrnod y gynhadledd, ar y diwrnod (mi fyddan nhw dal ar-lein fis Medi), gan archwilio cynllunio Crefydd, Gwerthoedd a Moeseg beirniadol, gwrthrychol a phlwrailaethol o'r blynyddoedd cynnar i leoliadau cynradd ac uwchradd.

Ar ddiwrnod y gynhadledd rhoddodd athrawon o bob cwr o Gymru gipolwg ar eu siwrneiau Crefydd, Gwerthoedd a Moeseg ac roedd nifer o enghreifftiau o addysgeg greadigol.

Cynhaliwyd Cyfarfod Blynyddol CCYSAGC ar ddiwedd y gynhadledd. Diolchwyd i bawb a oedd yn rhan o drefniadau'r gynhadledd am eu gwaith caled ac i ALI Wreccsam am ei chynnal.

Bydd cyfarfod gweithredol nesaf CCYSAGC ar 2 Hydref 2024 gyda'r cadeirydd newydd, y Parch. Edward J Evans.

PENDERFYNWYD: *nodir wybodaeth ddiweddaraf am CCYSAGC.*

9 DYDDIAD CYFARFODYDD NESAF SIR DDINBYCH

Bydd cyfarfod nesaf CYSAG Sir Ddinbych yn cael ei gynnal ar 15 Hydref 2024.

Daeth y cyfarfod i ben am 11.10am

Mae tudalen hwn yn fwriadol wag

Cyngor Sir Ddinbych Cyngor Ymgynghorol Sefydlog ar Addysg Grefyddol (CYSAG)		
Dyddiad y Cyfarfod:		15 Hydref 2024
Eitem ar y Rhaglen:	5	NEWYDDLEN YR HAF SIR DDINBYCH 2024
<u>Cefndir yr Adroddiad:</u>		
Cyhoeddwyd Newyddlen yr Haf Sir Ddinbych a Chonwy 2024.		
<u>Pwrpas yr Adroddiad:</u>		
Hysbysu'r aelodau ynghylch yr erthyglau yn y newyddlen.		
<u>Argymhellion:</u>		
<ul style="list-style-type: none">▪ Derbyn y newyddlen.		

Mae tudalen hwn yn fwriadol wag



REach

Denbighshire and Conwy SAC/RE Newsletter

Issue 3: Summer 2024

HELLO

and welcome to REach, the newsletter supporting the work of Denbighshire and Conwy's SAC/REs. This is our third edition. The first edition explained the role of purpose of SACRE and need for a newsletter, you can access the first edition [here](#). The Welsh Association of SACREs published 'Handbook for SACRE members in Wales' is a helpful guide providing details about the purpose and role of a local SAC/RE.

Our second edition provided key information about the new Locally Agreed Syllabus written to align with the introduction of a new Curriculum for Wales. [Click here](#) to access the 2nd edition. This edition also included information on the Agored Exploring Worldviews qualification, the St Giles Centre and a post 16 resource called Challenging Religious Issues.

For information about the RVE and the Curriculum for Wales 2022 please watch this 35 minute [training session](#) organised by Denbighshire Local Authority.

Religion, Values and Ethics (RVE): what's new?

The Welsh Association of SACREs worked in partnership with Welsh Government to produce a suite of Professional Learning modules on RVE in the new curriculum. There are 5 modules:

- [Module 1: early years](#)
- [Module 2: primary](#)
- [Module 3: secondary](#)
- [Module 4: additional learning needs](#)
- [Module 5: headteachers](#)



All the modules are designed to develop an understanding of the changes to RVE in the Curriculum for Wales as they relate to the relevant settings. They will help teachers feel confident, inspired and motivated to approach these changes within their specific schools or settings.

The modules support teachers to interpret the RVE guidance in a purposeful and practical way and they will allow practioners to identify opportunities to translate the

RVE guidance in a suitable way for learners.

All the modules have been written by people working within the relevant settings. They contain clear information about:

- the changes in the curriculum;
- the key aspects of the new curriculum;
- a definition of 'non-religious philosophical convictions';
- case studies.



Right to Withdraw

There is no right to withdraw a pupil from Religion, Values and Ethics, but parents with children receiving the current Religious Education (e.g. 10 and 11 in Sept 2024) will continue to have the right to withdraw their child from RE. This may result in parents withdrawing a year 10 learner but not withdrawing a child in year 7. Denbighshire SACRE have created guidance to support schools with changes regarding this legislation. [Click here](#) to access this guidance.

National and Regional Training Resources

National and Regional Professional Learning is available for all aspects of the Curriculum for Wales 2022. To access national sessions focusing on progression in the Areas of Learning and Experience can be accessed by [clicking here](#).



To access the GwE training materials click below:



- 1) Considerations of the Mandatory elements, principles of planning and designing your curriculum. [Video Slides](#)
- 2) Developing a shared understanding of the learning continuum, planning and assessment and pedagogical approaches to humanities. [Video Slides](#)

Denbighshire and Conwy SAC/REs are members of the Welsh Associations of Standing Advisory Councils/ for Religious Education. The purpose of WASACRE is to provide a forum for the exchange of good practice and to represent the aims, work, and views of its member SACs / SACREs.

Established in 1995, WASACRE provides member SAC/REs with the following support:

- **Advocacy and Representation** —
- Putting the views of SACs forward
- Working for the interests of SACs
- Raising the profile of SACs
- **Advice and Support** —
- Listening to the needs of member SACs
- Offering trusted advice from experts in Wales
- Identifying and engaging with opportunities and challenges
- **Networks** —
- Enabling the sharing of experiences and practise
- Building bridges across Wales and beyond
- **Relationships and Partnerships** —
- Engaging with national and international organisations
- Facilitating national initiatives and projects
- **Empowering Voices** —
- Supporting SACs with consultation responses
- Keeping SACs updated on relevant developments
- Encouraging participations in national conversations
- **Trusted Resources** —
- Statutory RVE guidance
- National professional learning resources
- Advisory documents
- WASACRE conferences
- **On the Pulse** —
- Well-informed and experienced Officers
- A broad and dedicated Executive Committee
- Up to speed with latest developments

To access the current Agreed Syllabus and resources supporting RE and collective worship please join our North Wales Religious Education Hwb Network... <https://hwb.gov.wales/go/d8tfh3> and/or our the Conwy or Denbighshire Microsoft TEAMS. Please email lordp2@hwbcymru.net for more information.

The WASACRE conference 2024 included an in-person conference day held on 13th June and a series of online seminars. The conference day, held at Wrexham University, provided delegates with keynote talks from Graham Donaldson, Lynne Neagle MS (Cabinet Secretary for Education and the Bishop of Llandaff, Rt Revd Mary Stallard. Attendees were able to choose from a selection of workshops from teachers and RVE professionals celebrating good practise in the Curriculum for Wales.



All the keynote sessions were recorded and can be accessed from the WASACRE website.

Schools belonging to WASACRE member SAC/REs can access the following webinars for free. [Click here](#) for access details

Pre-conference online seminars

Seminar 1 (23.04.24) An introduction to SAC / SACRE: What do you need to know? Donna Graves and Hayley Jones

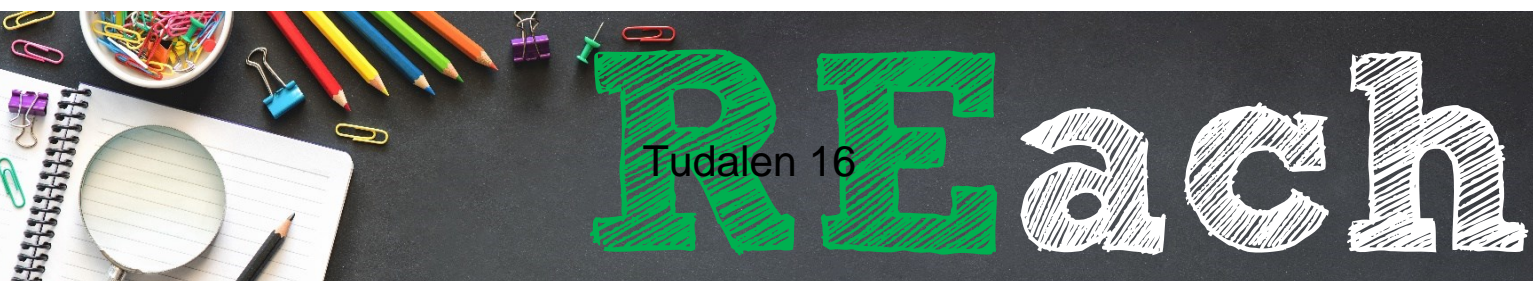
Seminar 2 (30.04.24) What does RVE look like in the early years setting? Sue Hughes and Libby Jones

Seminar 3 (07.05.24) Developing empathy through story in the nursery setting Phil Lord

Seminar 4 (14.05.24) Approaching RVE planning: Having regard to the RVE Guidance Libby Jones

Post-conference online seminars will be available soon.

Future Newsletters We would like to include articles showcasing good practice for RE and Collective Worship across North Wales. If you like to contribute to REach please contact LordP2@hwbcymru.net



Cyngor Sir Ddinbych Cyngor Ymgynghorol Sefydlog ar Addysg Grefyddol (CYSAG)		
Dyddiad y Cyfarfod:		15 Hydref 2024
Eitem ar y Rhaglen:	6	CYFLWYNIAD CREFYDD, GWERTHOEDD A MOESEG
<u>Cefndir yr Adroddiad:</u>		
<p>Mae ysgolion yn datblygu eu cwricwlwm yn unol â'r Cwricwlwm i Gymru 2022. Derbyniad ar ddarpariaeth AG a Chrefydd, Gwerthoedd a Moeseg yn Ysgol Dinas Brân.</p>		
<u>Pwrpas yr Adroddiad:</u>		
<p>Cael ein hysbysu ynglŷn â sut y cynllunnir a darperir AG a Chrefydd, Gwerthoedd a Moeseg yn Ysgol Dinas Brân, Llangollen.</p>		
<u>Argymhellion:</u>		
<ul style="list-style-type: none">▪ Derbyniad y cyflwyniad.		

Mae tudalen hwn yn fwriadol wag

<p>Cyngor Sir Ddinbych Cyngor Ymgynghorol Sefydlog ar Addysg Grefyddol (CYSAG)</p>		
Dyddiad y Cyfarfod:		15 Hydref 2024
Eitem ar y Rhaglen:	7	Y WYBODAETH DDIWEDDARAF AM AROLYGON ESTYN
<p><u>Cefndir yr Adroddiad:</u></p> <p>Cyhoeddwyd canllawiau arolygon Estyn ar gyfer ysgolion a gaiff eu harolygu rhwng mis Medi 2024 a 2030 yn ystod yr haf.</p>		
<p><u>Pwrpas yr Adroddiad:</u></p> <p>Hysbysu aelodau CYSAG am y newidiadau i'r fframwaith arolygu.</p> <p>Dogfennau perthnasol ar gyfer yr adroddiad hwn:</p> <p>Sut rydym yn arolygu</p> <p>Cymraeg Sut-rydym-yn-arolygu-Ysgolion-a-gynhelir-ac-UCDau_0.pdf (llyw.cymru)</p> <p>Saesneg - How We Inspect - 2024 maintained schools and PRUs (gov.wales)</p> <p>Beth rydym yn ei arolygu</p> <p>Cymraeg - Beth rydym yn ei arolygu - Ysgolion a gynhelir ac UCDau (llyw.cymru)</p> <p>Saesneg - What We Inspect - 2024 Maintained Schools and PRUs (gov.wales)</p>		
<p><u>Argymhellion:</u></p> <ul style="list-style-type: none"> ▪ Derbyn y cyflwyniad. 		

Mae tudalen hwn yn fwriadol wag

Cyngor Sir Ddinbych Cyngor Ymgynghorol Sefydlog ar Addysg Grefyddol (CYSAG)		
Dyddiad y Cyfarfod:		15 Hydref 2024
Eitem ar y Rhaglen:	8	ADRODDIAD BLYNYDDOL DRAFFT CYSAG 2023-24
<u>Cefndir yr Adroddiad:</u>		
<p>Mae'n ofyniad statudol ar y CYSAG i lunio Adroddiad Blynyddol o'i waith a chyflwyno'r adroddiad hwn i AdAS erbyn 31 Rhagfyr.</p>		
<u>Pwrpas yr Adroddiad:</u>		
<p>Nodi a chofnodi gwaith y CYSAG yn ystod y flwyddyn o fis Medi 2023 tan fis Gorffennaf 2024</p>		
<u>Argymhellion:</u>		
<ul style="list-style-type: none"> ▪ Cymeradwyo'r adroddiad, yn amodol ar unrhyw newid, fel cofnod cywir. ▪ Gofyn i'r awdurdod lleol gyfieithu'r adroddiad i'r Gymraeg, a'i anfon at bob ysgol a choleg yn Sir Ddinbych, ac unrhyw sefydliad arall yn unol â'r gyfraith ac fel y nodwyd yn yr adroddiad. 		

Mae tudalen hwn yn fwriadol wag



Annual Report

of the
Standing Advisory Council
&
Standing Advisory Council
for Religious Education

2023-24



The Role of the Standing Advisory Council for Religious Education:

The principal roles of SACRE are:

- Advising the Local Authority on matters to do with Religious Education and collective worship, or Spiritual and Moral Development;
- Consider applications from Headteachers that their school be released from the statutory requirements for Collective Worship to be wholly or mainly of a broadly Christian character (such applications are known as 'Determinations');
- Require a Local Authority to review its Agreed Syllabus;
- Monitor the provision of RE, collective worship and spiritual, moral, social and cultural development in the schools of the Local Authority;
- Give advice on teacher agreed syllabus RE, including the choice of teacher materials;
- Advising the Local Authority on the provision of training for teachers (in RE);
- Considering complaints about the provision and delivery of RE and collective worship made to the Local Authority.
- To publish an Annual Report on its work.

The Composition of SACRE:

The statutory requirements for the setting up of SACREs require three committees of members:

- Representatives of Christian denominations or other religions and their denominations reflecting the principal religious traditions of the locality;
- Teacher representatives;
- County Council representatives.

There is also the right to co-opt members.

CONTENTS

	Page No:
1. Executive Summary.	4-5
2. Advice given to the LA:	6-13
a) Religious Education and the Agreed Syllabus	
b) Learning and Teaching and provision of Initial Teacher Training	
c) Collective Worship	
d) Constitution	
3. Other Matters:	13-15
a) Local matters	
b) National matters:	
i. Estyn	
ii. DfES (Education Wales)	
iii. WASACRE	
c) Complaints	
4. Appendices:	15-16
a) Composition of SACRE	
b) Number and dates of meetings	
c) Organisations receiving the report	
d) Newsletter	

Images on the front cover - used on license from Adobe Stock images

RE: Provision of ITT	<ul style="list-style-type: none"> Presentations have been received from ITT providers and the Welsh National Centre for RE. 	
Collective Worship	<ul style="list-style-type: none"> WASACRE published guidance on the withdrawal of pupils from Collective Worship – October 2021. 	✓
Constitution	<ul style="list-style-type: none"> An additional member representing a non-religious world view to be added to the group on SACRE representing Faiths and non-religious philosophical convictions in line with the advice provided by the Welsh Government. Humanist representation to be sought for Committee Group A. 	✓
Other Matters: Local	<ul style="list-style-type: none"> A third newsletter has been published – the LA will distribute it to all schools. 	✓
Other Matters: National	<ul style="list-style-type: none"> Members receive regular updates of Estyn Inspection Reports or documents relating to RE and Collective Worship. WG released the Religion, Values and Ethics (RVE) guidance. The SACRE maintain its membership of WASACRE. Representatives attend and report back on the meetings of the association. Members attended the WASACRE conference hosted in Wrexham Glyndwr University. 	 ✓ ✓ ✓
Other Matters: additional	<ul style="list-style-type: none"> No other additional matters. 	
Complaints	<ul style="list-style-type: none"> No complaints received. 	

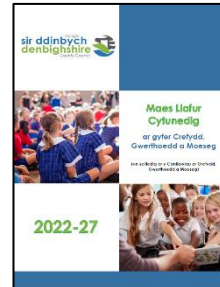
2. Advice Given to the LA

a. Religious Education and the Agreed Syllabus

i. The Agreed Syllabus

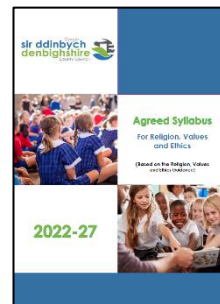
Agreed Syllabus for Religion, Values and Ethics (Curriculum for Wales 2022)

Denbighshire Local Authority Published its Locally Agreed Syllabus for Religion, Values and Ethics during the summer of 2023. The Agreed Syllabus is based on Welsh Governments' [Religion, Values and Ethics Guidance](#). Changes have been made to ensure that the document can be read as a Denbighshire Agreed Syllabus for RVE and each section is numbered to allow it to be navigated with ease.



During the academic year 2023-24, in accordance with the changes to the Curriculum for Wales 2022, Religion, Values and Ethics was taught to all primary school children and learners in year 7 and 8.

In the academic year 2023-24, secondary schools continued to teach the pre 2022 curriculum (called Curriculum for Wales 2008), including the Agreed Syllabus for Religious Education, to pupils from years 9 to 11.



To download a copy of the Denbighshire Agreed Syllabus for Religion, Values and Ethics please go to...

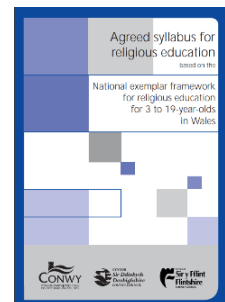
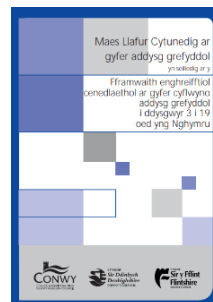
English – https://1drv.ms/b/s!Ai7Z9WAeWMNXhd8mIfgDThYuSHs_Hg?e=mHIWCW

Welsh –

<https://1drv.ms/b/s!Ai7Z9WAeWMNXhd9HfvczJ5abJjroPA?e=bugpZd>

Agreed Syllabus for Religious Education (Curriculum for Wales 2008)

The Agreed Syllabus, conforming to the requirements of the new Curriculum for Wales 2022, relates the subject titled 'Religion, Values and Ethics'. The previous Agreed Syllabus, still applicable for secondary schools for the reasons described above, relates to the subject titled 'Religious Education'. This is an important distinction.



Denbighshire adopted the 'National Exemplar Framework for Religious Education for 3-19 year olds' as the Locally Agreed Syllabus for 'Religious Education' in 2008. To download a copy of the Agreed Syllabus for Religious Education please go to:

English - <https://1drv.ms/b/s!Ai7Z9WAeWMNXhJkRqyAGO2b1HtmpnQ?e=D98kuj>

Welsh - <https://1drv.ms/b/s!Ai7Z9WAeWMNXhJkPk7GnR4j8dGRkWQ?e=WUXJSs>

ii. Standards

Examinations Reports

Due to continued guidance from Welsh Government on the way data is presented and to avoid arbitrary comparison of schools, members were not presented with and were unable to discuss the comparative examination data for examinations awarded in 2022/23.

The principal education manager for Denbighshire has attended all SACRE meetings this year. There has been and will continue to be a much closer relationship between the LA and SACRE. The principal education manager will be able to identify schools requiring additional support as a result of a schools' own self-evaluation, Estyn inspections and collaboration with the regional consortia.

Inspection Reports

There are no subject judgments in the current Estyn inspection framework. Instead, members receive information from the reports relating to Estyn's comments of a schools' provision of SMSC. See part c Collective Worship - Monitoring provision - Inspection reports.

Estyn conducted a thematic review of Religious Education at key stage 2 and key stage 3. Estyn published its findings June 2018. The report provided recommendations as a result of its findings. Click image to see report:

The current attached report outlines recommendations summarised below.



Estyn provide **Supplementary Guidance** to help inspectors to consider specific aspects of education and training. In 2021, Estyn published guidance on '[Equity, human rights and English as an additional language](#)'. Many of the aspects Inspectors *should consider* when inspecting this area can be supported by effective RE or RVE teaching.

Estyn also publish **Effective Practice** case studies. The following two highlight good practice in RVE or RE.

- [Promoting pupils' multicultural and moral development](#). (May 2024)
- [How the school uses the wider outdoor environment and community \(Cynefin\) to enhance pupils' learning experience](#). (July 2023)

b. Learning and Teaching

Curriculum for Wales 2022

For information about the Curriculum for Wales 2022 please watch this 35 minute [training session](#) organised by Denbighshire Local Authority.

Religion, Values and Ethics – Supporting Guidance

Supporting Guidance has been created to support the understanding and planning of RVE within context of the curriculum for Wales 2022. The guidance contains information about:

- RVE concepts
- Concepts cross-referenced with the Humanities AOLE Statements of What Matters and Descriptions of Learning
- RVE Lenses
- RVE Journeys
- Points to consider for schools and settings.

Download a copy using the links below:

English - <https://1drv.ms/b/s!Ai7Z9WAeWMNXhd9Fsz8MOigIHzmFSw?e=Ft4QkH>

Welsh - <https://1drv.ms/b/s!Ai7Z9WAeWMNXhd9Yj5eNwB9YBEA2XA?e=KaQ8Cr>



GwE – Unpacking the Humanities AOLE (Secondary)

During the summer term 2022, GwE provided two training sessions for secondary school humanities teachers providing key messages regarding this AOLE.

The first session focus:

- An understanding of the mandatory elements of the Curriculum for Wales framework in relation to the Humanities
- The principles of planning and key considerations for the Humanities
- The pedagogical considerations within the 'Designing your curriculum' section outlined in the AoLE guidance

Presentation English - <http://cefnogaeth.gwegogledd.cymru/wp-content/uploads/2022/06/Humanities-Session-1.pdf>

Presentation Welsh - <http://cefnogaeth.gwegogledd.cymru/wp-content/uploads/2022/06/Dyniaethau-1.pdf>

Video English - <https://www.youtube.com/watch?v=b3LpzxDCERw>

Video Welsh - <https://www.youtube.com/watch?v=b3LpzxDCERw&t=7s>

The second session focus:

- Developing a shared understanding of the learning continuum
- Considering approaches to planning and assessment
- Exploring effective pedagogical approaches within and beyond the AoLE

Presentation English - <http://cefnogaeth.gwegogledd.cymru/wp-content/uploads/2022/07/Session-2-Humanities-eng.pdf>

Presentation Welsh <http://cefnogaeth.gwegogledd.cymru/wp-content/uploads/2022/07/Sesiwn-2-Dyniaethau -CYFRWNG-CYMRAEG.pdf>

Video English - <https://www.youtube.com/watch?v=ZuE-HbpwB1Y&t=3s>

Video Welsh - <https://www.youtube.com/watch?v=Z1gemVVRzZQ>

Religious Education

SACRE and the LA have previously provided comprehensive documents and materials in support of the Agreed Syllabus for Religious Education, and these contain advice on methods of teaching and delivery of RE.

The planning documents, 'Comprehensive Guide to RE' and 'RE in the Foundation Phase', which complement the Agreed Syllabus for Religious Education, continue to

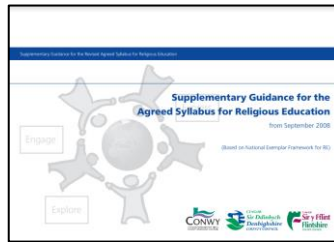
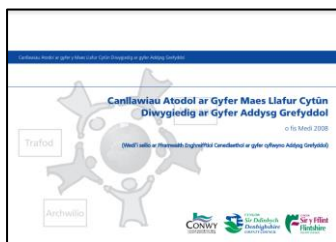
be accessed and used by schools. These resources may be adapted for the delivery of RVE in the primary sector and will continue to be relevant to year groups being taught Religious Education. The resources are available on a Hwb Network - North Wales Religious Education Network. To download a copy of these resources please see below:

Comprehensive Guide to RE

English -

https://drive.google.com/file/d/1G9jCYby8XQJgg9m8JN6HYA3sr_iR5E18/view?usp=sharing

Welsh - <https://drive.google.com/file/d/1OsNQ-UtnokWTIWzxBuJQfz7tVLohhml/view?usp=sharing>

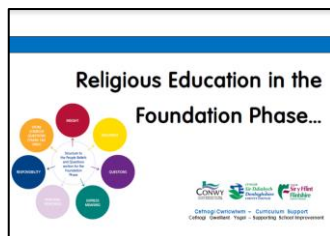


RE in the Foundation Phase

English - <https://drive.google.com/file/d/1X-9J8auJglQ-GzGk12o-002s81gdQ8tV/view?usp=sharing>

Welsh -

https://drive.google.com/file/d/17itLQaqOsQ6WjLdk_ee1AlaigdqwKW0w/view?usp=sharing



Religious Education Quality Mark



Self-evaluation materials continue to be promoted and are available on the REQM website. The RE Quality Mark recognises, celebrates and publicises outstanding religious education in all primary and secondary schools in England, Wales and Northern Ireland through its three levels of award,

bronze, silver and gold. More information about the quality mark can be found on

<https://www.reqm.org/>

Self Evaluation Materials:

[RE-Quality-Mark-Criteria-2024.docx](#)

[Meini-Prawf-MAAG-2024.docx](#)

North Wales RE Hwb Network

Teaching and research materials are available for teachers accessible through Hwb's - North Wales RE network - <https://hwb.gov.wales/go/d8tfh3>. Only those with a Hwb account will be able to access the materials on this network. The network contains teaching resources and research material relevant to Religious Education.



Key research material available is:

- [Big Ideas for Religious Education – Edited by Barbara Wintersgill](#) (English only)
- [Signposts – Policy and practice for teaching about religions and non-religious world views](#) (English only)
- [A pedagogy of embrace : a theology of hospitality as a pedagogical framework for religious education in Church schools](#) (English only)
- [How well does a cross curricular Humanities Scheme of Work reflect the four purposes of the new Wales Curriculum 2022?](#)

RE:Online



[RE:Online](#) is a website developed by Culham St Gabriel's to equip and resource teachers and educational professionals to support high Quality religion and worldviews education.

AGORED CYMRU LEVEL 2 AWARD IN EXPLORING WORLDVIEWS

'Exploring Worldviews' is a suite of level 1 and 2 qualifications supporting an understanding of religious and non-religious worldviews. The qualification meets the three core skills set out in the exemplar framework (current curriculum), and it provides opportunities for exploring the concepts for RVE through the statements of what matters in the Humanities area of learning and experience in the Curriculum for Wales (new curriculum). It is not designed to replace the current Religious Studies GCSE, however, it will provide an accessible recognised qualification whilst allowing a school to meet its statutory obligation at Key Stage 4. More details can be found by visiting



English - <https://www.agored.cymru/Units-and-Qualifications/Learning-Core/Exploring-Worldviews>

Welsh - <https://www.agored.cymru/Unedau-a-Chymwysterau/Craidd-Dysgu/Archwilio-Bydolygon>

WJEC GCSE Religious Studies - Teaching from 2025



Specification for the GCSEs and 'A' level courses can be accessed here.

- [GCSE](#)
- [A Level](#)

The following [Link](#) includes dates for the publication of the specification, assessment materials and guidance for teaching.

Diversity and anti-racism professional learning (DARPL)

DARPL's website contains a range of training material to support this important aspect of the Curriculum for Wales 2022.

English - <https://darpl.org/>

Welsh - <https://darpl.cymru/>



National Association for Teachers of Religious Education



Schools have been informed of anti-racist resources made available by NATRE. Unfortunately, these resources are only available in the English language. They can be accessed here...

<https://www.natre.org.uk/about-natre/projects/anti-racist-re/>

RE Today Services

[RE today](#) provides resources to support teachers as they engage with the Curriculum for Wales.



Post 16 Challenging Religious Issues (E-Journal)

Challenging Religious Issues is a journal for students and teachers of AS and A-level Religious Studies. It is also a useful

resource for anyone who wants to develop or refresh their subject knowledge. Over 65 open access journal articles have been published in the journal so far including articles written by leading scholars and practitioners. The articles are linked to

Religious Studies A-level specifications. The articles are interactive through the use of 'discussion points' and live links to relevant external websites. All issues are available in English and Welsh. The St Giles' Centre has funded and managed the Welsh language version from issue 14 onwards. Please click the link below to access the Challenging Religious Issues from the St Giles website.

English - <https://stgilescentre.org/16-2/>

Welsh - <https://stgilescentre.org/cy/16-2/>



European Forum for Teachers of Religious Education

Teaching of RE differs greatly across Europe. For a greater insight into RE in neighbouring countries visit www.eftre.net



not expected that inspectors will report on the quality of Collective Worship. It is up to each inspection team to weigh up the significance of any strengths and weaknesses in each inspection area.

There is no expectation for inspectors to report on whether a school meets the statutory duty to provide a daily act of collective worship, there would be an expectation of a comment in the report if a school were to be found in breach of its statutory duty.

As part of the process of monitoring, Estyn Inspection Reports are analysed for comments on collective worship and spiritual, moral, social and cultural development (SMSC). These are compiled and noted by SACRE. Letters are sent to schools following the consideration of them in SACRE, commending good practice. Estyn restarted inspections during the summer 2022. 10 Inspection reports were analysed and presented to SACRE members during the Summer Term meeting.

Positive Comments in Inspection Areas:	No of schools
Wellbeing and attitudes to learning	5
Teaching and Learning Experiences	7
Care, Support and Guidance	10

INSET for Collective Worship

WASACRE published guidance on the withdrawal of pupils from Collective Worship – October 2021.

English - <https://drive.google.com/file/d/1ul4IrhIHGeDrKC2EYU3LpypJdsussTX0/view>

Welsh - <https://drive.google.com/file/d/149OtijKIL4F3qYbLXUVYzv4cRGhyk4IL/view>

Other useful guidance on Collective Worship:

English - [GUIDANCE ON COLLECTIVE WORSHIP JUNE 2012](#)

Welsh - [\(C\) GUIDANCE ON COLLECTIVE WORSHIP](#)

Determinations

No Determinations have been made.

d) Constitution

No changes have been made to the constitution.

3) Other Matters

a) Local

SACRE members met three times during the academic year. All three meets were held virtually.

Newsletter

Conwy and Denbighshire published its third newsletter. It provides schools with news related to RE/RVE and is especially important during the preparation for the new curriculum. The third edition contains information about the Curriculum for Wales. It also contains useful information about the WASACRE summer conference held at Wrexham's Glyndwr University.



RVE Network

Denbighshire County Council created a Microsoft TEAMS during the summer 2022. The network 'DCC Religion, values & ethics 2022' allows teachers to access the Agreed Syllabus, the Supporting Guidance and other useful material. To access the network please use the following link:



<https://teams.microsoft.com/l/team/19%3aSJHouQczzZxDrh7YWAFqk1FKtFzQ-A5hN8e8y856Zfg1%40thread.tacv2/conversations?groupId=aac98823-0b35-48fab2a-5e711bb714c6&tenantId=4f3f0e52-b734-4164-9409-1b601d147993>

b) National

i. Estyn:

Estyn Inspection Framework 2024 onwards:



Estyn inspection guidance for schools inspected from Sept 2024-2030 was published during the summer. Documents explaining what and how Estyn inspect can be accessed on the Estyn Website

How we inspect

English - [How We Inspect - 2024 maintained schools and PRUs \(gov.wales\)](#)

Welsh [Sut-rydym-yn-arolygu-Ysgolion-a-gynhelir-ac-UCDau_0.pdf \(gov.wales\)](#)

What we inspect

English - [What We Inspect - 2024 Maintained Schools and PRUs \(gov.wales\)](#)

Welsh - [Beth rydym yn ei arolygu - Ysgolion a gynhelir ac UCDau \(gov.wales\)](#)

ii. Welsh Government - Education and Skills:

Supporting framework for RE

SACRE members were informed of Professional Learning resources supporting the roll out of the new curriculum, created by a Welsh Government and WASACRE collaboration. These resources were published Summer 2023:

Welsh Medium Playlist -

<https://hwb.gov.wales/repository/resource/eef7e399-93bb-4d7c-ab68-145c93f4c6d3>

English Medium Playlist - <https://hwb.gov.wales/repository/resource/eef7e399-93bb-4d7c-ab68-145c93f4c6d3>



iii. WASACRE

Members of SACRE and the LA were represented at three meetings of WASACRE and received some of the presentations that had been made. SACRE continued to receive reports from representatives attending the meetings of the Association. Minutes and papers from WASACRE have also been presented at SACRE meetings. Minutes and presentations can be found on WASACRE's website <http://wasacre.org.uk/>.



The WASACRE conference 2024 included an in-person conference day held on 13th June and a series of online seminars. The conference day, held at Wrexham University, provided delegates with keynote talks from Graham Donaldson, Lynne Neagle MS (Cabinet Secretary for Education and the Bishop of Llandaff, Rt Revd Mary Stallard. Attendees were able to choose from a selection of workshops from teachers and RVE professionals celebrating good practice in the Curriculum for Wales. Contact lordp2@hwbcymru.net for details about accessing the videos and seminar materials

c) Complaints

No complaints were received by the SACRE.

4. Appendices:

a) Composition of SACRE

Representing Religious Denominations and Non-Religious Philosophical Convictions:

Church in Wales
Jennie Downes

Roman Catholic
Collette Owen

Baptist Union
Nomination awaited (Welsh)
Nomination awaited (English)

Presbyterian
Rev. Brian H Jones (Welsh)
Nomination awaited (English)

Methodist
Rev. Martin Evans-Jones

United Reformed
Nomination awaited

Union of Welsh Independents
Nomination awaited

Religious Society of Friends
Dominic Oakes

Humanist
Suzy Sturley

Representing Teacher Associations:

Secondary Headteacher
Leah Crimes

Junior Headteacher
Nomination awaited

Secondary RE Specialists
Sarah Griffiths

Infant Headteacher
Nomination awaited

Special School Teachers
Nomination awaited

Junior Classroom Teacher
Susan Williams

Infant Classroom Teacher
Nomination awaited

Representing Denbighshire County Council

Councillor Ellie Chard
Councillor Cheryl Williams
Councillor Ann Davies
Councillor Gill German

Councillor Merfyn Parry
Councillor Huw Williams
Councillor Delyth Jones
Councillor Emrys Wynne

Co-opted Members:

Tania Ap Sion – Director of the St. Mary's Centre

b) Number and dates of meetings

SACRE Meetings:

- 9th October 2023
- 15th February 2024
- 19th June 2024

c) Organisations receiving the report

- DFES
- Denbighshire Schools
- The report is available on the WASACRE website for interested organisations.

Mae tudalen hwn yn fwriadol wag

Cyngor Sir Ddinbych Cyngor Ymgynghorol Sefydlog ar Addysg Grefyddol (CYSAG)		
Dyddiad y Cyfarfod:		15 Hydref 2024
Eitem ar y Rhaglen:	9	CCYSAGC
<u>Cefndir yr Adroddiad:</u>		
<p>Mae'r CYSAG yn parhau i fod yn aelod o Gymdeithas Cynghorau Ymgynghorol Sefydlog ar Addysg Grefyddol Cymru ac yn derbyn adroddiadau ar gyfarfodydd y mae aelodau'n mynd iddynt, copïau o'r cofnodion ac unrhyw adroddiadau eraill gan y Gymdeithas.</p>		
<u>Pwrpas yr Adroddiad:</u>		
<p>Bod yr aelodau'n cael gwybod am bwyslais a phrif ganlyniadau'r cyfarfod blaenorol.</p>		
<u>Argymhellion:</u>		
<ul style="list-style-type: none">▪ Derbyn diweddariad llafar am gynhadledd CCYSAGC a gynhaliwyd ar 13 Mehefin 2024.▪ Cytuno pwy fydd yn bresennol yng nghyfarfod nesaf CCYSAGC ar 14 Tachwedd 2024.		

Mae tudalen hwn yn fwriadol wag